

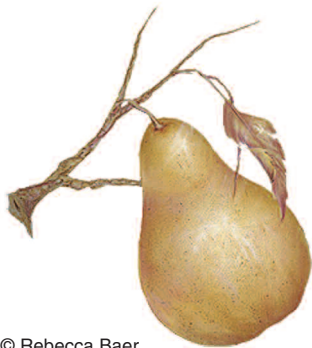


Dry brushing with the Loew-Cornell® Crescent brush

Series 247 - 1/8, 1/4, 3/8, 1/2



The full arc of the Crescent brush design and its unique combination of bristle and golden taklon make it perfect for dry brushing. Dry brushing is an excellent technique for shading and highlighting, creating depth and adding interest to your painting by building up layers and gradual transitions of color.



© Rebecca Baer

Loading the Brush: Do not use water. Load the brush with paint and then remove excess by stroking on a soft paper towel.*

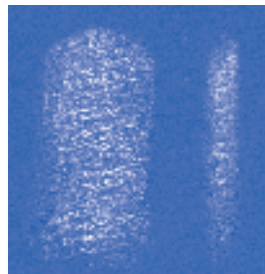
Technique: Dry brushing is a skimming technique done with light pressure. The brush can be used across the flat for broad coverage like Rebecca's pear or turned on edge for precise control in small areas. Stroke color in one direction.

* **Rebecca's Tip:** *In the smaller sized brushes, you may wish to preload the brush with DecoArt Canvas Gel, wiping out the excess on a soft paper towel before loading with paint. This will help keep paint from drying in the brush.*

A. Drybrush larger areas using the flat of the brush.

B. Turn and use the side of the brush for precise control in small areas.

A. **B.**



© Copyright 2007 Loew-Cornell, Inc. – www.loew-cornell.com

For more information on Rebecca Baer's art and techniques visit www.rebeccabaer.com