



all about™ Colored Pencils!



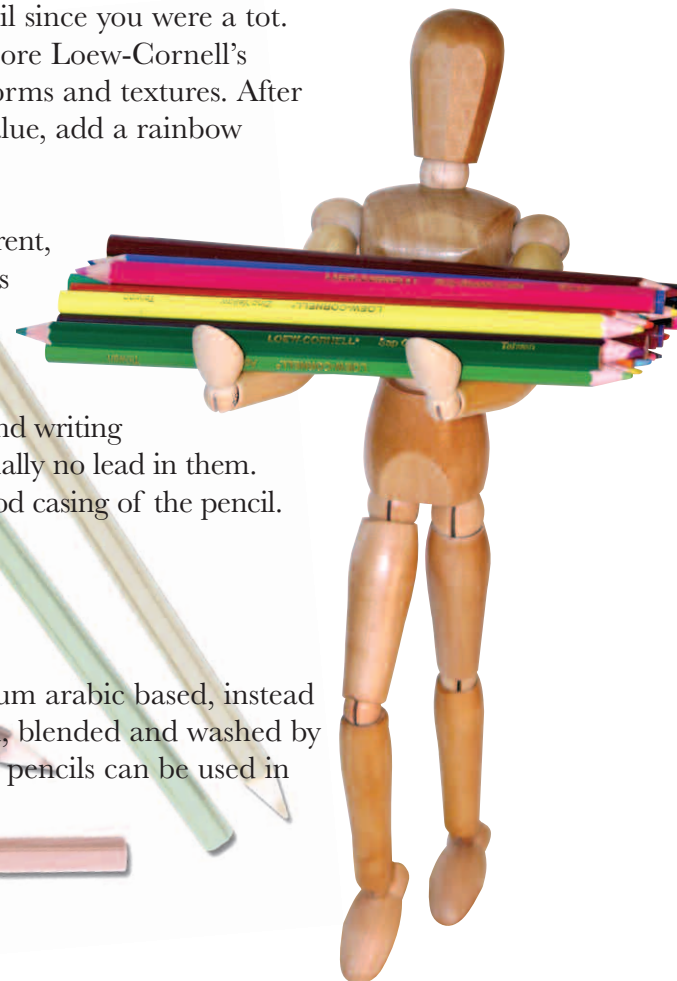
Colored Pencils

Colored pencils are loads of fun, versatile to use, and easy to transport. Drawing is the foundation that all art is built upon. It is a great place to start, and a constant area to practice with a goal of improvement. You have used a pencil since you were a tot. So the pencil is natural to use as an art tool. Be sure to explore Loew-Cornell's **all about™ Drawing** to learn more about drawing basic forms and textures. After using graphite pencils and charcoal to learn shading and value, add a rainbow of hues with colored pencils!

Colored pencils are wax based. The pencil marks are transparent, and when used in layers, can produce glowing results. Solvents like turpenoid can be used on the colored pencil drawing to make a wash, but since we have watercolor pencils, why risk the toxicity of solvents? Colored pencils can be mixed with graphite pencils. Graphite pencils are the standard drawing and writing pencils. Sometimes referred to as a "lead pencil", there is actually no lead in them. Lead is the term used for the color cylinder housed in the wood casing of the pencil.

Watercolor Pencils

Watercolor pencils feel like colored pencils in use, but are gum arabic based, instead of wax. After drawing with them, the images can be moved, blended and washed by water applied with a brush. Colored pencils and watercolor pencils can be used in combination.



This information is presented in good faith, however no warranty of any kind is given with respect to such information, nor are any results guaranteed. Always read instructions for the products you are working with.

© Copyright 2007 Loew-Cornell, Inc., 400 Sylvan Ave. Englewood Cliffs, NJ 07632
Loew-Cornell, Inc. is a subsidiary of Jarden Corporation (NYSE:JAH)

www.loew-cornell.com
AACP

Getting Started

Sharpening Your Pencils



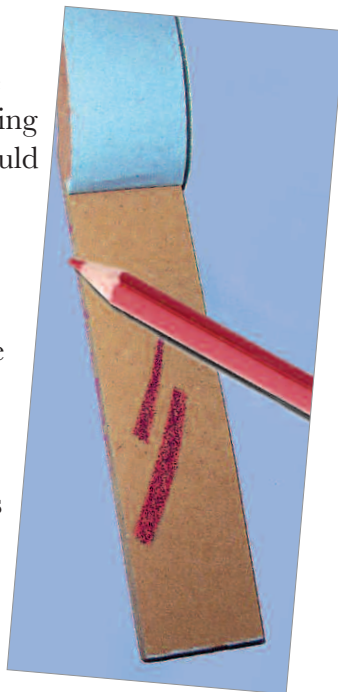
There are many types of sharpeners, from hand-held to electric. The important thing is blade sharpness.

Small hand-held sharpeners give you control, and do not waste too much pencil by over-sharpening, as can be done with an electric machine.

Blades need to be replaced when dull. You can tell if the sharpener is dull if the wood around the pencil crushes. Hand-held sharpeners are inexpensive, so if it is dull, it is time for a new one. There are two different sizes of pencil sharpener holes, so make sure your sharpener fits your pencil.

Try not to drop your pencils. The lead is fragile and can break inside the pencils, causing much sharpening frustration. Watercolor pencils should not be sharpened when wet as the lead has been softened and will break and smooch.

Use a sandpaper paddle to achieve the shape of the point that you wish. This works especially well with watercolor pencils to make a wider stroke line. Some techniques work better with a chisel edge on the pencil. When the sheet of sandpaper is filled, you can dispose of it and use the next one underneath.



Choosing a Surface

There are many fine papers and boards available to use for your drawings. Use a quality paper that is acid-free and not too thin. Beginners tend to use scratch paper to practice, but you may waste a wonderful work if it is not on a good substrate. Colored papers can give your work a whole new look. Try using light pencils on dark paper. In this method you are drawing light rather than shadows. Mat board is a great substrate and takes away all the problems of creases and wrinkles. “Tooth” refers to the texture of the paper. Some tooth is nice because it grabs the colored pencil and lets more layers be applied.

Watercolor paper is also good, especially if you plan to dampen your drawing with water or solvent. Watercolor paper comes in different weights and textures. 90# is light, 140# is a good choice, and 300# is like a board. Price increases as the weight increases. Paper finishes are hot-pressed, cold-pressed, and rough. Hot-press is smooth, cold-press has some bumpy texture and - you guessed it - rough is just that. Cold-press, or CP, is usually a good choice. Watercolor paper is usually 100% cotton rag, and will last forever. It has been found in the Egyptian tombs. Try many varieties to see which you like. When choosing your subject, contemplate which paper lets you explore and say what you want.



This information is presented in good faith, however no warranty of any kind is given with respect to such information, nor are any results guaranteed. Always read instructions for the products you are working with.

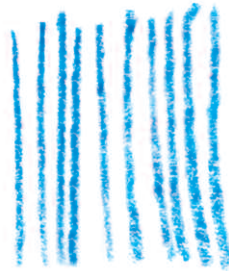
© Copyright 2007 Loew-Cornell, Inc., 400 Sylvan Ave. Englewood Cliffs, NJ 07632
Loew-Cornell, Inc. is a subsidiary of Jarden Corporation (NYSE:JAH)

www.loew-cornell.com
AACP

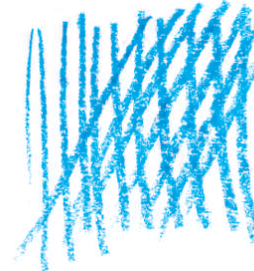
Making Marks



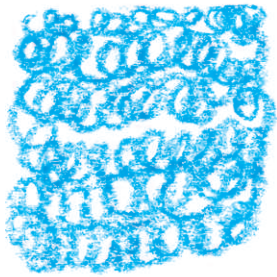
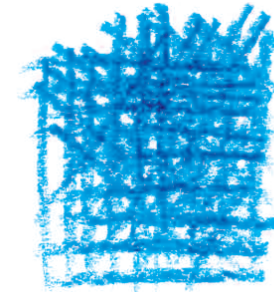
1. Stippling.
Make little or big dots.
The more dense the dots,
the darker the value.



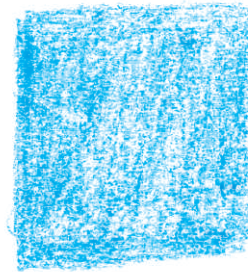
2. Hatching.
Short lines in a
similar direction.



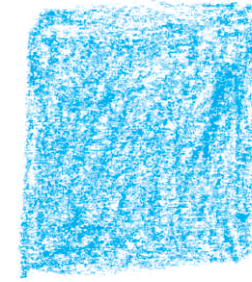
3. Cross-hatching.
Layers of lines going in a variety
of directions. The more layers,
the darker the value.



4. Scribbling.
Making little circles
to build up value.



5. Smooth light even value.
This is a good way to start. Light pressure
on the pencil using any technique 1-4.
If color is applied too dark too fast,
the paper will be saturated and will allow
no more color to be applied. Build up
layers of color with lightly applied pressure.



6. Turpenoid® solvent
has been brushed
over #5 for a
wash look.



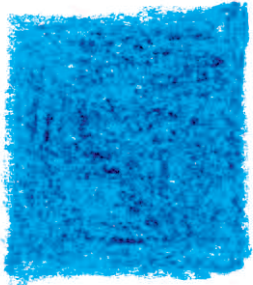
This information is presented in good faith, however no warranty of any kind is given with respect to such information, nor are any results guaranteed. Always read instructions for the products you are working with.

© Copyright 2007 Loew-Cornell, Inc., 400 Sylvan Ave. Englewood Cliffs, NJ 07632
Loew-Cornell, Inc. is a subsidiary of Jarden Corporation (NYSE:JAH)

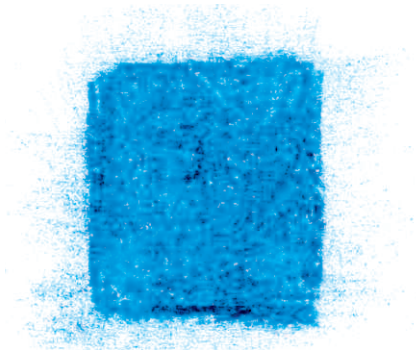
www.loew-cornell.com
AAPC

Making Marks

Burnishing



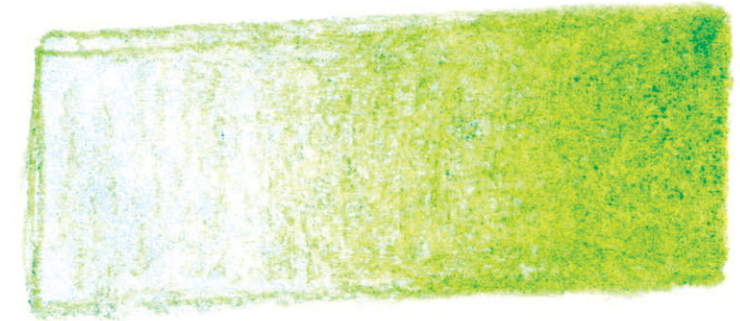
7. Drawing with heavy pressure is called “**burnishing**”. Usually no more color can be added over a heavily burnished area, as it is “saturated” with color.



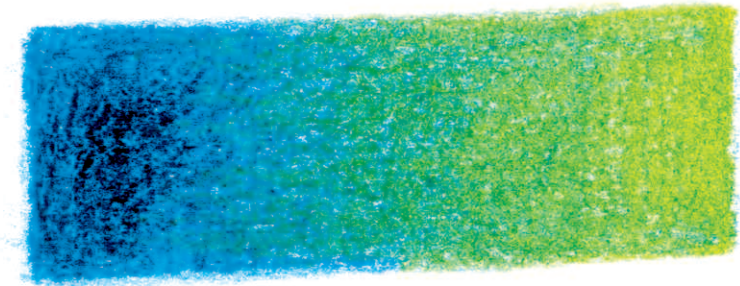
8. Pencil residue is left in burnishing (#7) and can cause smears and smudges. To smudge on purpose, use your finger, a tortillon or blending stump to pull out soft color. To prevent a smudge, keep pencil particles clear by dusting your drawing surface with a soft brush. Another safety precaution would be to keep tracing paper over surface so your hand does not touch the drawing. This will prevent the oils from your hands from penetrating the paper. Even wearing cotton gloves may help keep paper clean.



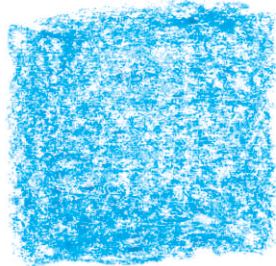
12. (Top) Dark to light gradation of blue.



13. (Middle) Light to dark gradation of green.



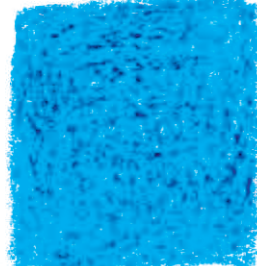
14. (Bottom) #13 applied over #12 to blend two colors



9. Plain, even-tone blue.



10. White colored pencil burnished over the top of #9.



11. #10 with blue burnished over the top.



This information is presented in good faith, however no warranty of any kind is given with respect to such information, nor are any results guaranteed. Always read instructions for the products you are working with.

© Copyright 2007 Loew-Cornell, Inc., 400 Sylvan Ave. Englewood Cliffs, NJ 07632
Loew-Cornell, Inc. is a subsidiary of Jarden Corporation (NYSE:JAH)

www.loew-cornell.com
AACF

Learn About Color



Color Pencil Color Wheel

Colored pencil is transparent and semi-transparent in layers, so that when it is applied in layers it is luminescent. Creating a color wheel is a good exercise to get to know your colors. Each color has been applied with light pressure on the edges and burnished in the center to demonstrate how dark the pencil will go. The light pressure areas are overlapped. New colors are produced by the layering technique. **Primary colors** are yellow, red, and blue. Start with these three colors in a triangle, equal distances from each other. **Secondary colors** are green, orange, and violet. Place these between the primaries that are mixed to create them. **Tertiary colors** are going to be created by the blends and layered combinations that make yellow-green, red-orange, etc.



Watercolor Pencil Color Wheel

If you have never used watercolor pencils before, warm up with a watercolor wheel. Sketch a light circle. Around the circle, put a square burnished patch of each primary color. Place as many squares as you wish adding secondary or tertiary colors in their proper order. With a stiff bristle brush, put water on the edge of one square and try to blend the color toward the center of the circle going from dark to light. Control water with a paper towel. Blot your brush on the towel so that it is damp and does not release too much water onto the paper so as to become out of control.



This information is presented in good faith, however no warranty of any kind is given with respect to such information, nor are any results guaranteed. Always read instructions for the products you are working with.

© Copyright 2007 Loew-Cornell, Inc., 400 Sylvan Ave. Englewood Cliffs, NJ 07632
Loew-Cornell, Inc. is a subsidiary of Jarden Corporation (NYSE:JAH)

www.loew-cornell.com
AACP

Play With Color

Fun to try



“Frottage”, or rubbings, can produce magical drawings in seconds. Find low relief sculpture. Coins are perfect. Other sources might be jewelry, buttons, and decorative plates. Place the item under light-weight paper and rub a colored pencil over the item on the paper. These “drawings,” or rubbings, would look great in collage work or scrapbook pages.



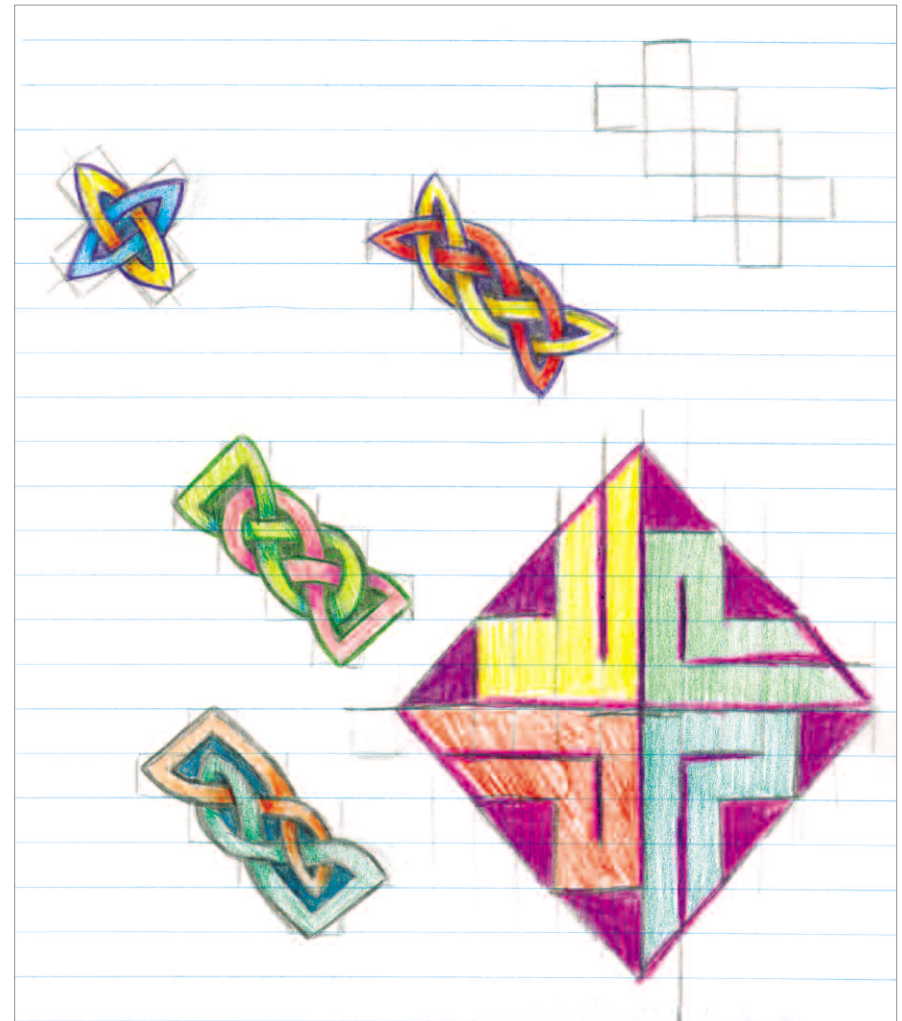
Use colored pencils on vellum paper. Vellum looks like tracing paper but is stronger. Since you can see through the paper, it is easy to trace with. You can put pencil on both sides and achieve another color that is slightly frosted. It can be cut and layered with other drawings, too. No limit to this idea.



Draw first with a graphite pencil. This ensures that you have all your values in place. Next add colored pencil. If done lightly, the art can look like a vintage hand-tinted photograph. The old masters used this technique, called grisaille, in their paintings.



Watercolor pencils are versatile. You can dip the pencil in water and draw. You can draw on wet paper. You can draw, and then wet the line using a brush. Experiment and have fun!



Doodle. Using graph paper and lined paper are fun ways to think through patterns, and a great way to challenge our brains, too. Colored pencils allow you to play with color themes when planning a quilt to planning a decorating scheme.



This information is presented in good faith, however no warranty of any kind is given with respect to such information, nor are any results guaranteed. Always read the instructions for the products you are working with.

© Copyright 2007 Loew-Cornell, Inc., 400 Sylvan Ave. Englewood Cliffs, NJ 07632
Loew-Cornell, Inc. is a subsidiary of Jarden Corporation (NYSE:JAH)

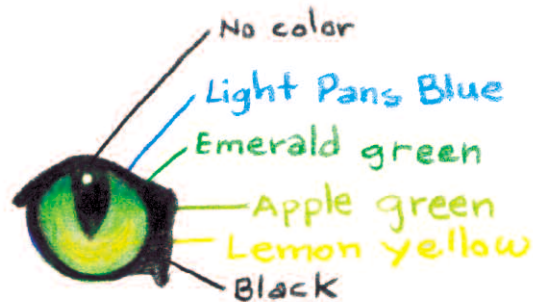
www.loew-cornell.com
AACP

Color Pencil Project

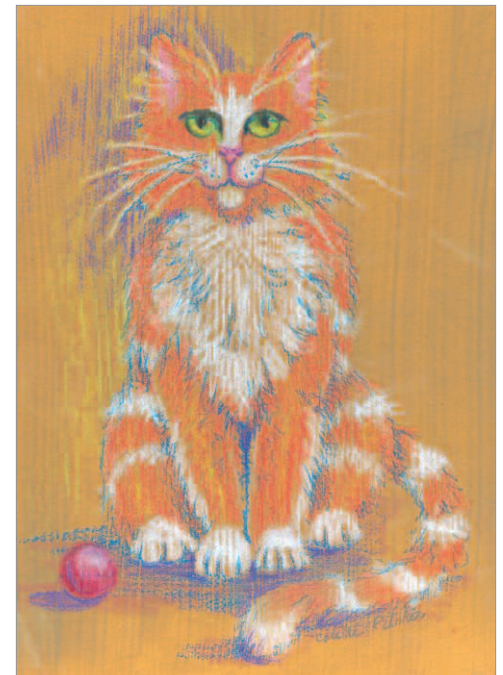
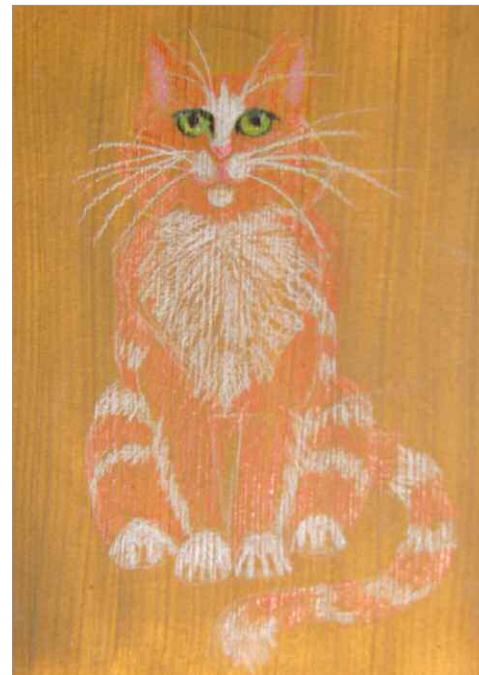
Cat drawing

This drawing was done on a piece of foam core board that was prepared with a layer of gold acrylic paint. After the paint was dry, a layer of acrylic medium with pumice was painted over the entire surface. The surface now feels like a fingernail emery board. The “tooth” will grab color. If this surface preparation is too much work, there are similar surfaces available for purchase in your art store. The steps to drawing start with the contour shape and light pressure. Because of the medium value of the surface, both white and dark colored pencil show impressively.

An enlargement of the cat’s eye shows the subtle use of many colored pencils that blend to make an interesting eye. The eye is the focal point. Allow some of the surface color to peek through the colored pencil to add another value.



Tip: A razor blade can be used to gently remove colored pencil. This is a great way to get a white highlight sparkle in an eye or a whisker on a kitten.



This information is presented in good faith, however no warranty of any kind is given with respect to such information, nor are any results guaranteed. Always read the instructions for the products you are working with.

© Copyright 2007 Loew-Cornell, Inc., 400 Sylvan Ave. Englewood Cliffs, NJ 07632
Loew-Cornell, Inc. is a subsidiary of Jarden Corporation (NYSE:JAH)

www.loew-cornell.com
AACP

Watercolor Pencil Project

Cornucopia drawing

Sketch a drawing in graphite on tracing paper. It is easier to erase graphite than colored pencil, so if you want to be able to erase, use graphite first. The original drawing can be rubbed onto your watercolor paper. Place the drawing graphite side down on watercolor paper and rub over the back. You may wish to tape the drawing down so it won't move. Be careful with the tape - test it first to make sure it does not pull up the paper when removed. A trick is to put the sticky side of the tape on your pant leg first to remove the really sticky part. Then the tape won't tear the paper. White artists tape works well and is acid free. Reinforce your drawing using watercolor pencils. Use a brush with water to soften the color. Go over the drawing after it is dry to add as many lines as you desire.



About the Artist: Colette Pitcher is a life long artist who translates her vision into paintings and sculpture. "Having good drawing skills is a basic must for any artist and a constant battle to keep sharp", says the artist, "It's a good thing that drawing is so much fun to practice."

Art has always been a part of her life-from working as a computer game designer in New York, to owning the Showcase Art Center in Colorado for the past decade. Colette writes a monthly column on watercolor for PaintWorks magazine. Colette's husband Gary, owner of Dragon Casting, a bronze art foundry, is also a creative resource for making the impossible come true daily.

Visit www.ColettePitcher.com



This information is presented in good faith, however no warranty of any kind is given with respect to such information, nor are any results guaranteed. Always read instructions for the products you are working with.

© Copyright 2007 Loew-Cornell, Inc., 400 Sylvan Ave. Englewood Cliffs, NJ 07632
Loew-Cornell, Inc. is a subsidiary of Jarden Corporation (NYSE:JAH)

www.loew-cornell.com
AACP