

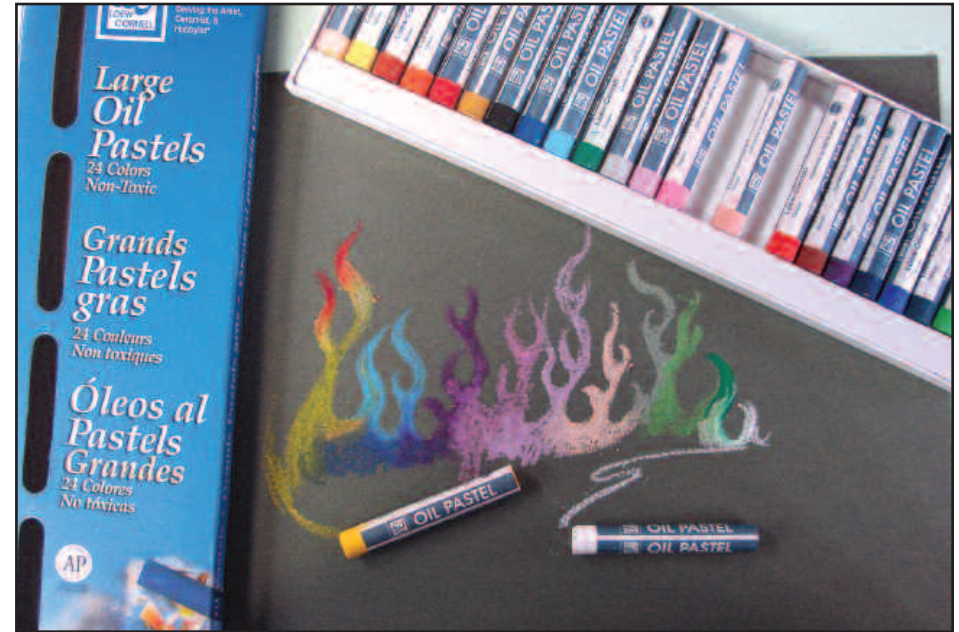


# all about™ OIL PASTELS!

## What are Oil Pastels?



Oil pastels often get confused with traditional soft and hard pastels. Soft and hard pastels are a chalk-like medium, while oil pastels are more like crayon. They get termed pastels because of their similar stick shape, but they are very different in their applications. All pastels are pure pigment. It is their binder, what holds the pigment together, that makes them different. We are going to explore oil pastels, which are pure pigment in a fossil wax with mineral oil as a binder. Oil pastels are acid free, will never yellow over time, won't crack, will never harden, and can be mixed with other mediums.



## What can oil pastels be used on?



### Any rigid surface such as:

- Fabric (not to be washed)
- Glass
- Metal
- Matboard
- Foam board
- Paper\*

\*Papers have a tooth, or textured surface, that help the pastel grip to the surface. You can use this surface to add texture to your drawing. If you draw with a light amount of pressure, the pastel touches only the top of the paper texture and it will leave the paper color (papers come in a variety of color choices) in the depression of the texture. Press hard, and the pastel will fill the peaks and valleys of the paper, eliminating the textured look.



*In art, there really is no right or wrong. Don't be afraid to experiment.*

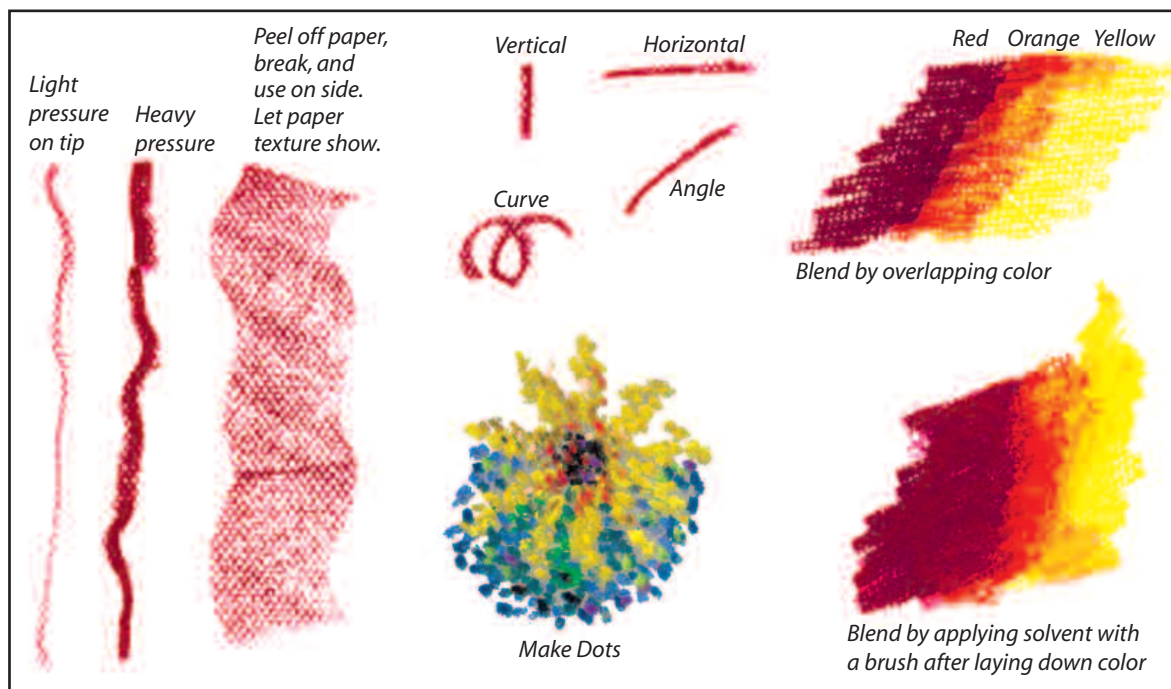


# Making Marks

Drawing requires practice and skill. Scary, huh? Take the fear away by calling it “making marks”. There are only so many types of marks you can make. You can master these in an afternoon!

## Make marks in different directions:

- Vertical lines suggest upright, formal, growth ideas
- Horizontal lines suggest stability and calm
- Angles suggest energy, danger, and uneasiness
- Curved lines give a softer focus
- Use the pastel on end to make a thin line
- Turn pastel on its side to get a quick thick line or shape
- Blend colors by layering, overlaying colors



## Oil Pastel Tips and Techniques

**Challenge:** Dirty pastels



**Solution:** Dip pastel into solvent and wipe with paper towel. Like New!



**Challenge:** Too much pastel on surface.



**Solution:** Scrape off excess with craft knife, or old credit card. Pastel can also be removed by wiping area with solvent.

**Tip:** Oil pastels are great to use when painting outdoors. They are quick, and can be mixed to make other colors, but **BE WARNED:** they melt, so keep 'em cool unless you want to use them for a great abstract project.

**Challenge:** How do I frame my finished work?



**Solution:** Oil pastels remain moveable forever, so they need to be protected from smudging. Traditionally mat and frame oil pastel behind glass like any other work on paper. Oil pastels do not require a fixative finish. You can spray them with an acrylic varnish for a protective coat if you wish. This would allow your work to be framed without glass, like an oil painting, and it could be gently wiped clean with a damp cloth.

# Blending Color

## Using Solvent

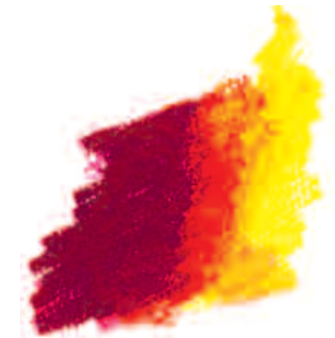


Oil pastels can be blended using turpentine or most turpentine substitutes and a brush. To use solvent, pour a small amount into a lidded glass jar. Wet your brush with solvent. As you brush over your pastel, the solvent will dissolve the pastel allowing you to blend and move it similar to paint.

When finished, clean your brush in solvent first, and finish with mild soap and cool water.

Practice with solvent and oil pastels on scrap paper first to learn its working properties. It may bleed further than you anticipate. Usually it will darken the paper when wet, but dry and leave no difference in color.

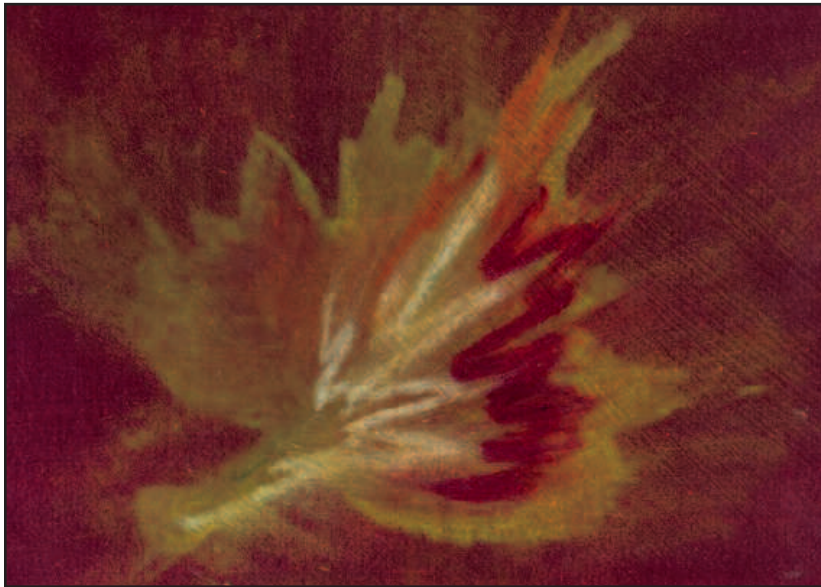
**Safe Use:** Solvents are toxic. Follow all manufacturers' instructions. Keep a lid on the jar and use in a well ventilated area. Solvent can be reused, as pigment will settle to the bottom of the jar. Clean solvent can be poured into another jar if desired. When no longer usable, dispose of solvent following household hazardous waste requirements for your area.



*Blend by applying solvent with a brush after laying down color*



*Draw on paper with oil pastel then pull out color using a brush dipped in solvent.*



## Getting Hot

As we mentioned, oil pastels are wax-based. This means they will melt when exposed to heat. Bad if you leave them in the car on a hot day, but maybe not so bad for creating interesting artwork!

This leaf was drawn with oil pastels on a sanded board. (Foamcore, coated with acrylic medium with pumice added.) The drawing was then heated with a rubber stamper's embossing heat gun, making the pastels soft and pliable. While soft, a bit of paper towel was used to pull out colors. When warmed, colors can smear easily, providing some interesting results. Play. Think abstract, and just enjoy color.



# Start an Oil Pastel Project



1. Gather materials: oil pastels, colored paper, reference photo(s), solvent (odorless turpentine), brush



2. Draw. Light pressure lets the texture of the paper show.



3. Closer flowers get more pastel by applying more pressure. Put one color over another in layers. Colors blend when pushed together.



4. Flowers can be rearranged from reference photo. This grouping will be in the foreground, so they are more detailed and brighter, with hard edges.



5. Background flowers are drawn lighter & smaller, with less detail.



6. Brush solvent over background to soften colors & edges as desired.



7. Finish by putting light over darks, softening with solvent and adding as much to your picture as you wish. Oil pastels let you layer, draw, dot, and dissolve to your heart's content.  
*Tip: For better composition, the center of interest is not in the center of the page.*



*Tip: Arrange pastels in an order that makes them easy to find and pick up. Here they are light to dark in rainbow order: red, orange, yellow, green, blue, violet, neutrals, from right to left.*

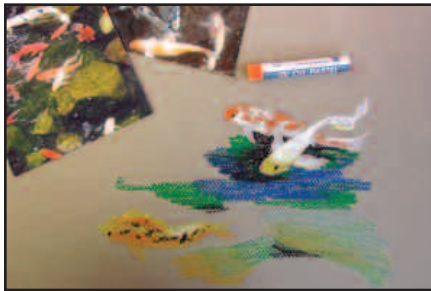


This information is presented in good faith, however no warranty of any kind is given with respect to such information, nor are any results guaranteed. Always read instructions for the products you are working with.

© Copyright 2006 Loew-Cornell, Inc., 400 Sylvan Ave. Englewood Cliffs, NJ 07632  
Loew-Cornell, Inc. is a division of Jarden Corporation (NYSE:JAH)

www.loew-cornell.com  
AAOP-4

# Low Maintenance Koi Pond



1. Using reference photos, pick out the fish shapes you like best and draw them on paper. You can draw over it if you don't like it.



2. Use dark colors for water, making a nice contrast with the bright and light fish.



3. Smooth or blend water with a brush in solvent.



4. Highlights or "sparkle" on the water can be added on top of dark colors with a white pastel.



5. Draw in more fish until you feel your pond is full.



6. Surround fish with water. Blend with solvent, draw on top, add dots of sparkle until you think you have your picture complete.



These fish will live forever and you will never have to empty and clean their pond!



This information is presented in good faith, however no warranty of any kind is given with respect to such information, nor are any results guaranteed. Always read instructions for the products you are working with.

© Copyright 2006 Loew-Cornell, Inc., 400 Sylvan Ave. Englewood Cliffs, NJ 07632  
Loew-Cornell, Inc. is a division of Jarden Corporation (NYSE:JAH)

www.loew-cornell.com  
AAOP-5

# Make a Greeting Card!

## Supplies:

Loew-Cornell® Oil Pastels

Available sizes:#912 - 12 Colors

#924 - 24 Colors

#925 - 36 Colors

Butterfly rubber stamp

Black ink pad

Craft knife

Card stock

Stamp butterflies using black ink. Cut around wing with the craft knife. Do not cut through body of butterfly. Fold wing up making a crease along body. Slip a scrap of paper under wing to protect the background while coloring each wing with oil pastel. Practice blending. Three pastel shades were used in these wings. Use brown or another color for the butterflies bodies. **Tip:** *If you make a slip, or have a smear from the stamp, try covering it with a white pastel.* Rub pastel around the edges of the paper along the wings to cover them. Fold a contrasting color of paper (we used black) for a liner if desired. Add your message and you have a cute, quick, day brightener!



**About the Artist:** *Colette Pitcher is a life long artist who translates her vision into paintings and sculpture. "Having good drawing skills is a basic must for any artist and a constant battle to keep sharp", says the artist, "It's a good thing that drawing is so much fun to practice."*

*Art has always been a part of her life-from working as a computer game designer in New York, to owning the Showcase Art Center in Colorado for the past decade.*

*Colette writes a monthly column on watercolor for PaintWorks magazine. Colette's husband Gary, owner of Dragon Casting, a bronze art foundry, is also a creative resource for making the impossible come true daily.*

*Visit [www.ColettePitcher.com](http://www.ColettePitcher.com)*



This information is presented in good faith, however no warranty of any kind is given with respect to such information, nor are any results guaranteed. Always read instructions for the products you are working with.

© Copyright 2006 Loew-Cornell, Inc., 400 Sylvan Ave. Englewood Cliffs, NJ 07632  
Loew-Cornell, Inc. is a division of Jarden Corporation (NYSE:JAH)

[www.loew-cornell.com](http://www.loew-cornell.com)  
AAOP-6